

2026 - 2027

Global Explorer

Junior Holiday
Program



Table of Contents

Click the headings to navigate to each section

Program Introduction	03
Campus Locations	04
Pricing and Packages	04
Program Schedule (Sydney and Melbourne) - Sample Timetable	05
Photo Gallery	07
Frequently Asked Questions (FAQs)	08









Program Introduction

Be a **Global Explorer** with Greenwich College

The **Global Explorer Junior Holiday Program** at **Greenwich College** offers a unique combination of cultural experiences and specialised English courses to help create future citizens of the world.

Make your next adventure the trip of a lifetime! Come and start your own journey to Australia now!

 2026/2027 PROGRAM INTAKES	Intakes every Monday within each term. Term duration does not exceed final Friday of final term month
 TERM START DATES	Terms: <ul style="list-style-type: none">• 5th January – 6th February 2026• 13th July – 14th August 2026• 4th January – 29th January 2027
 DURATION	Minimum 1 week Maximum 5 weeks
 CAMPUSES	Sydney & Melbourne
 ENTRY REQUIREMENTS	Non student visa holders Aged 7 - 16 years (Parents or nominated caregivers must accompany juniors aged 7-12 years to and from campus each day)
 ACCOMODATION	Homestay is available for students 13 years and above

Varying package options

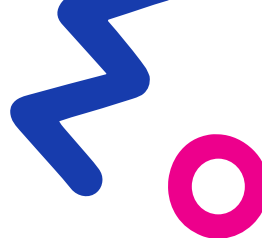


Student safety as a priority



High-quality homestay options





Program Locations



Sydney

Greenwich College's exciting, modern campus is located in the heart of Sydney's bustling CBD. With opportunities during excursions to explore the city and visit iconic Sydney landmarks such as the Sydney Opera House, you can experience the best this city has to offer during this program.

Campus Location & Contact Details

Level 2, 396 Pitt Street (enter via Goulburn Street)
Sydney, NSW 2000
Australia

Phone +61 2 9264 2223 Fax +61 2 9264 2224



Melbourne

Greenwich College's state-of-the-art, modern campus is located in the centre of vibrant Melbourne. With the opportunity to experience the best of what Melbourne has to offer through excursions during the week while completing your studies.

Campus Location & Contact Details

Level 8, 120 Spencer Street
Melbourne, VIC 3000
Australia

Phone +61 3 8609 000

Pricing & Packages

STANDARD FEES*

- \$250 one time Enrolment fee
- \$650 per week tuition fee
- \$100 weekly material/excursion fee

INCLUDED IN STANDARD FEES

- 15 hours of lessons per week + weekday afternoon excursion or activity
- Study materials
- End-of-course certificate
- 1 full-day excursion or activity per week

HOMESTAY/ACCOMMODATION FEES†

- \$390 Homestay Placement Fee
- \$445 per week (Single Room, Shared Bathroom) – Minimum 2 weeks‡ (Extra stay \$70 per night)
- \$210 one way Airport Transport Fee
- \$235 Caregiver Arrangement Fee (for students staying in a homestay)
- \$70 per week Caregiving Fee Service
- \$18 per day Lunch box if required

*Program changes will incur additional charges.

†2026 Fees – Subject to Change.

‡2-week minimum duration for homestay is applicable to the Global Explorers Junior Holiday Program only.

Family Benefits[§]

Sibling Offer

If siblings enrol together, only one enrolment fee will be charged.[§]

Parent Special

If a parent would like to enrol in an ELICOS course, we have a special available.[§]

[§]Contact us at sales@greenwichcollege.edu.au for full information and terms and conditions.

Program Schedule

Sydney Sample Timetable (5 week duration with activities included)

		MONDAY	TUESDAY	WEDNESDAY	THURSDAY	FRIDAY	SAT	SUN
WEEK ONE	MORNING	Class	Class	Class	Class		Chill day	Chill Day
	AFTERNOON		 Hyde Park Scavenger Hunt	 On-Campus Activity	 Opera House/ Circular Quay Walking Tour	 Sydney Aquarium		
WEEK TWO	MORNING	Class	Class	Class	Class	Morning Graduation	Chill day	Chill Day
	AFTERNOON		 Royal Botanic Garden Sydney	 On-Campus Activity	 State Library of NSW	 Taronga Zoo		
WEEK THREE	MORNING	Class	Class	Class	Class	Morning Graduation	Chill day	Chill Day
	AFTERNOON		 Centennial Parklands	 On-Campus Activity	 The Rocks + The Rocks Museum	 Luna Park		
WEEK FOUR	MORNING	Class	Class	Class	Class	Morning Graduation	Chill day	Chill Day
	AFTERNOON		 Darling Harbour	 On-Campus Activity	 Wendy Whiteley's Secret Garden	 Australian National Maritime Museum		
WEEK FIVE	MORNING	Class	Class	Class	Class	Morning Graduation	Chill day	Chill Day
	AFTERNOON		 Sydney Tower Eye	 On-Campus Activity	 The Australian Museum Burra Exhibition	 Watson's Bay & Hornby Lighthouse		

Disclaimer - Activities and excursions may be subject to change or rescheduling due to weather conditions.

Melbourne Sample Timetable (5 week duration with activities included)

		MONDAY	TUESDAY	WEDNESDAY	THURSDAY	FRIDAY	SAT	SUN
WEEK ONE	MORNING		Class	Class	Class		Chill day	Chill Day
	AFTERNOON	Class	 City Walking Tour (Orientation)	 On-Campus Activity	 Fitzroy Gardens & Captain Cooks Cottage			
WEEK TWO	MORNING		Class	Class	Class	Morning Graduation	Chill day	Chill Day
	AFTERNOON	Class	 City Circle Tram Ride	 On-Campus Activity	 Southbank + Docklands Walks	 Melbourne Zoo		
WEEK THREE	MORNING		Class	Class	Class	Morning Graduation	Chill day	Chill Day
	AFTERNOON	Class	 Shrine of Remembrance + Botanic Gardens	 On-Campus Activity	 Graffiti Tour & Laneways	 Luna Park		
WEEK FOUR	MORNING		Class	Class	Class	Morning Graduation	Chill day	Chill Day
	AFTERNOON	Class	 Aussie Sports	 Mini Golf	 Melbourne River Cruise	 Brighton Bathing Boxes		
WEEK FIVE	MORNING		Class	Class	Class	Morning Graduation	Chill day	Chill Day
	AFTERNOON	Class	 Birrarung Marr Playground	 On-Campus Activity	 Melbourne Skydeck	 Museum + Royal Exhibition Building		

Disclaimer - Activities and excursions may be subject to change or rescheduling due to weather conditions.



Photo Gallery



Frequently Asked Questions (FAQ's)

My child is a beginner level student. Can they study this program?

Answer: We welcome students of all English levels.

My child is unsure. Can we apply for a shorter study period and extend afterwards?

Answer: Yes. Your child can extend their study period, subject to availability.

Am I able to enrol in an English course while my child attends the program?

Answer: Yes, parents and family members are welcome to enrol in our regular English courses.

Can I join the activities with my child?

Answer: Parents and caregivers are not allowed to join in the fun. This is so students are encouraged to socialise and make friends independently.

What do we need to bring for the activities?

Answer: This depends on the day, but your child should always have comfortable shoes, water, sunscreen and a hat.





Greenwich College is a proud member of the NextEd Group, a leading training provider delivering accredited and non-accredited education and training solutions throughout Australia and internationally.



© Greenwich College Pty Ltd | greenwichcollege.edu.au

ABN 31 114 584 904 • CRICOS CODE 02672K • RTO 91153